

Hotel Electric Lock : *S type (SLIM)* <ANSI>

# Handle & Color Variation



Type 478 (ST)



Type 476 (BS)

Available as standard in 6 high-quality finishes.

Type 476 Handle


 Satin Chrome Finish (ST)  
 Key Override available as an option.

Type 66 Handle



Polished Chrome Finish (SB)

Type 478 Handle



Satin Brass Finish (BS)

Type 74 Handle



Polished Brass Finish (YB)

Type 478 Handle



Mid Bronze Finish (CB)

Type 478 Handle



Matt Black Finish (BK)

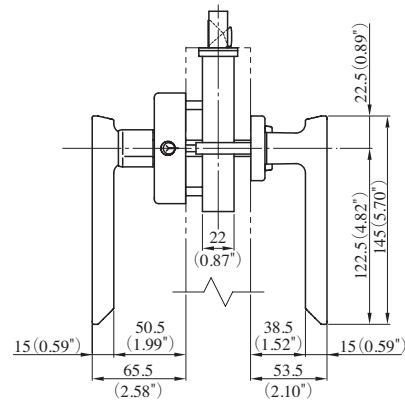
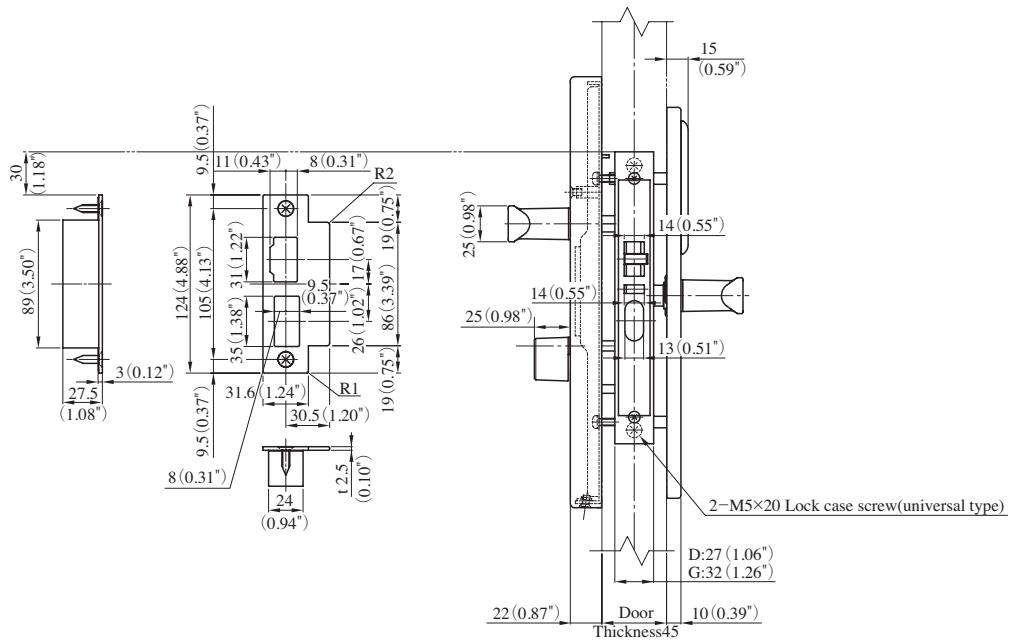
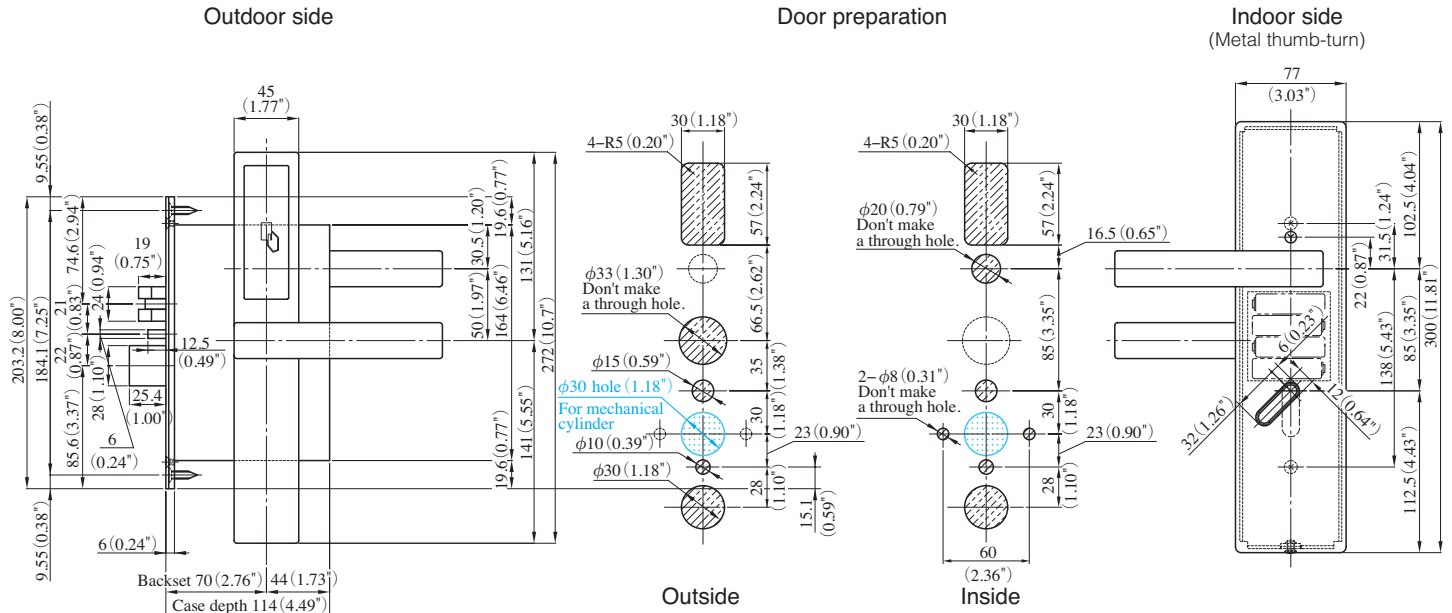
ANSI 156.25 test confirming it status as a "Grade 1" electronic mortise lock.

## MIWA LOCK CO., LTD.

 JAPAN 3-1-12, Shiba, Minato-ku, Tokyo 105-8510  
 URL: [www.miwa-lock.biz](http://www.miwa-lock.biz)

 U.S.A 9272 Jeronimo, Suite 119, Irvine CA 92618  
 URL: [www.miwalock.com](http://www.miwalock.com)

# Detail Drawing



## Specifications

Handle type	66, 74, 476, 478
Mountable Cylinders	U9
Backset	70 mm
Finishes	Satin Chrome (ST) / Polished Chrome (SB) Satin Brass (BS) / Polished Brass (YB) Mid Bronze (CB) / Matt Black (BK)
Door thickness	35-65mm
Usability	Left-hand and right-hand usable (inward opening)
Power Supply	4 AA alkaline batteries
Mobile key	Optional
RFID standard	ISO 14443 A (MIFARE Plus / MIFARE Classic)
Supported door	Interior (Metal and Wood)
Audit Trail	Up to 600 events
BHMA / ANSI	Grade 1 certified
Fire Rating	UL10C certified